



Information sheet – Storage units Au/Wädenswil



Address & Contact

Seestrasse 317, 8804 Au/Wädenswil

Hotline +41 44 405 44 55

Monday to Friday, 8 am to noon and 1 pm to 5.30 pm

Outside business hours

Emergency number +41 79 405 64 64

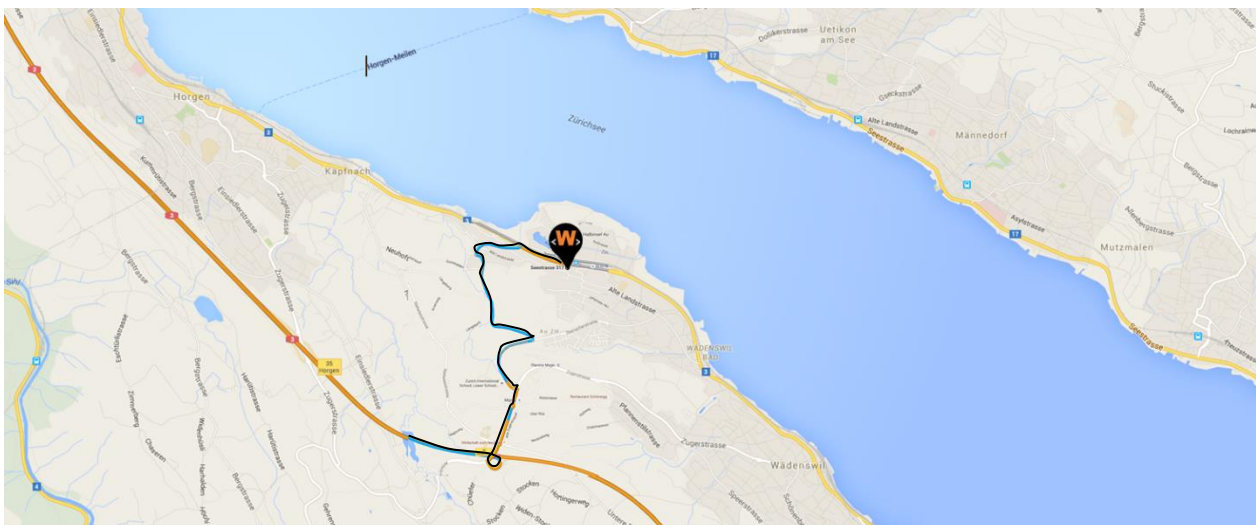
Access 24/7

Specific location information

- **Storage units 201 – 284 are on the 2nd floor.**
- **Storage units 301 – 399 are on the 3rd floor.**
These two floors can be accessed via the ramp on the ground floor via Seestrasse or via the ramp on the 4th floor (on the hillside) via Austrasse → Alte Landstrasse
- **Storage units 401 – 495 are on the 4th floor.**
The 4th floor can be accessed by ramp (on the hillside) via Austrasse → Alte Landstrasse
- You will receive a keycard with which you can access the building and your storage unit. You will find more details on the extensive information sheet.
- Please close all doors and gates behind you! Doors and gates left open will trigger an alarm!
- CCTV is in operation in the building.
- Motion sensors turn on the lights automatically in the corridors. The lights will turn off again automatically after a certain period (there are no light switches).
- Running water and toilets are available on the 2nd and 4th floors.
- Deliveries can be made via the ramps on the ground floor and 4th floor. Parking spaces are available for visitors.
- Smoking is strictly prohibited on the premises of w. wiedmer ag!
- Please note that the area is to be left tidy and all equipment must be returned to its designated location. Please take any waste with you and dispose of it privately.

How to reach us...

Interstate A3: Exit 36 – „Wädenswil“ | From rail station „Au ZH“ at a walking distance of 2 mins.





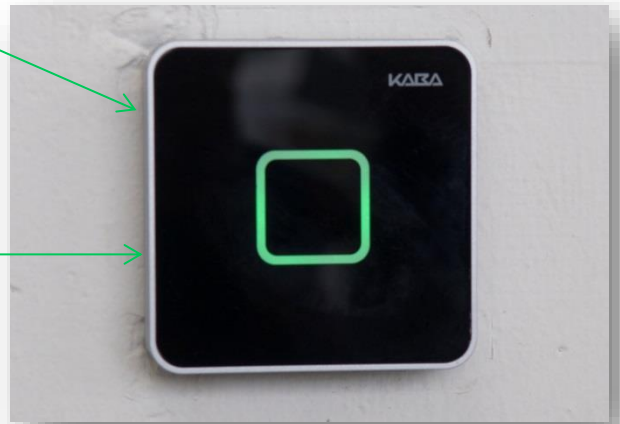
Main entrance at Seestrasse.



Entrance to the storage units on the 4th floor via Austrasse → Alte Landstrasse



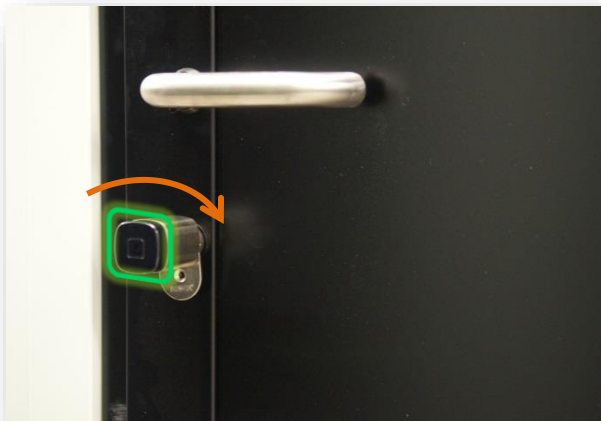
Please hold your keycard to the KABA-sensor on the right side of the entrance door...



...until it flashes green and you hear the door unlock (it takes a few seconds).

IMPORTANT: Even if the door or the roll-up door is already open when you arrive, you must register with your personal badge at the KABA sensor every time you visit the warehouse to activate access inside the building and to your storage unit for that day.

- › The switches to open and close the gates are located inside.
- › Please follow the orange numbers on the doors to find your personal storage unit.



Please hold your keycard to the KABA-sensor until the lock / doorknob flashes green. After that turn the doorknob rightwards to unlock the door.



To lock the door, please hold your keycard to the sensor once again and turn the doorknob leftwards.



Please keep an eye on the battery status of the digital cylinder

Dear tenants

We would like to point out that the digital cylinder at the door to your storage box is powered by a standard battery.

In order to ensure 24/7 access, almost discharged batteries must be replaced promptly. Of course we make periodic checks and measure the battery charge level.

We measure from the outside with a device directly on the digital cylinder and also the battery change is done from the outside - we do not need access to your storage unit at any time and do not open any doors.

If a battery needs to be changed between the regular checks, we ask for your help. Please let us know if the digital cylinder flashes red 4 times to indicate that the battery charge level is low and that a battery change is necessary soon.

➔ Please send an e-mail to info@wiedmer.ch

- Last name First name according to rental contract
- Warehouse location
- Unit no.
- Battery status low / empty

Battery full

Hold an authorised* access card to the sensor, the cylinder will flash green once. The mechatronic unit engages, the lock can be opened or closed.

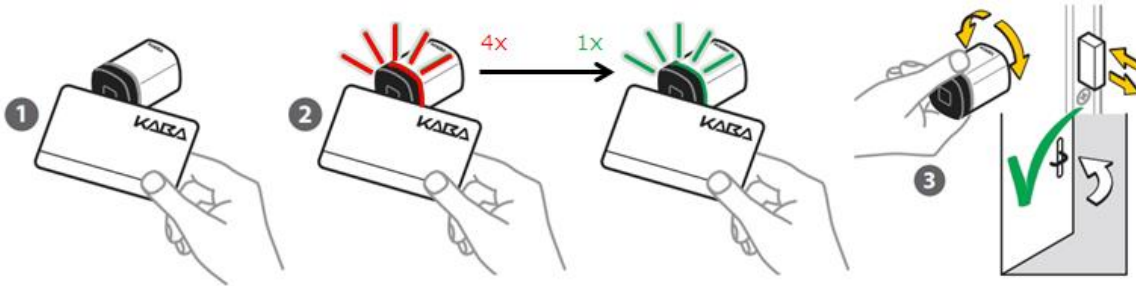


*If the card is not authorised, the cylinder flashes red 4 times and the knob turns idle.



Battery low → please report this as soon as possible

Hold an authorised access card to the sensor, the cylinder will flash 4 times red and 1time green.
The mechatronic unit engages, the lock can still be opened or closed.



Battery empty → please report immediately

Hold an authorised access card to the sensor, the cylinder will not flash and remains off.
The mechatronic unit does not couple, the lock can no longer be opened or closed.



Thank you & best regards

Your <W> Lagerbox-Team



Sicher. Sauber. Trocken. w-lagerbox.ch
self-storage by w. wiedmer ag