



## Information sheet – Storage units Winterthur



### Address & Contact

In der Au 6, 8406 Winterthur

**Hotline +41 44 405 44 55**

Monday to Friday, 8 am to noon and 1 pm to 5.30 pm

Outside business hours

**Emergency number +41 79 405 64 64**

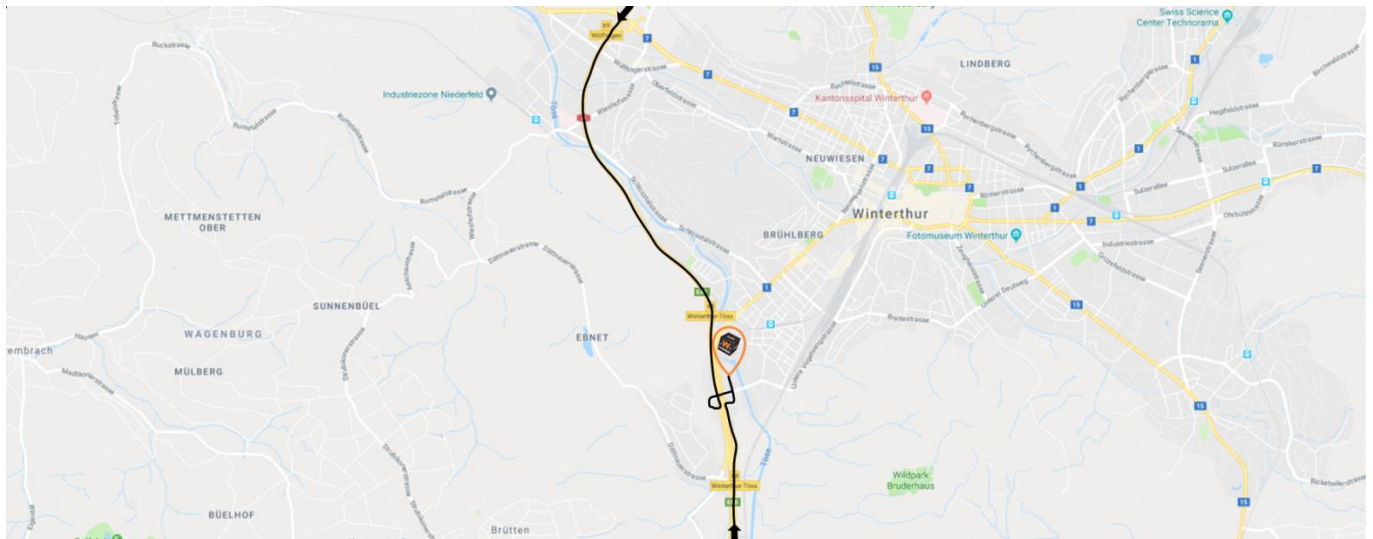
Access 24/7

### Specific location information

- **Storage units no. 1001 to 1039 are on the 1st. floor.**
- **Storage units no. 2001 to 2089 are on the 2nd. floor.**
- Building access directly after the Migrol gas station. Attention, around the building is one-way. The main entrance is on the north side with access via ramp and cargo elevator. The electric rolling shutter doors can be opened from the inside via the control panel. Entrance south and east provide access to the storage units, but are only suitable for deliveries to a limited extent (stairs).
- You will receive a keycard with which you can access the building and your storage unit. You will find more details on the extensive information sheet.
- Please close outside doors and gates behind you! Doors and gates left open will trigger an alarm!
- CCTV is in operation in the building.
- Motion sensors turn on the lights automatically in the corridors. The lights will turn off again automatically after a certain period (there are no light switches).
- Running water and toilets are available on the ground-floor.
- Deliveries can be made via the ramps and the cargo elevator. Visitor parking is available.
- Smoking is strictly prohibited on the premises of w. wiedmer ag!
- Please note that the area is to be left tidy and all equipment must be returned to its designated location. Please take any waste with you and dispose of it privately.

### How to reach us...

Interstate A4: Exit 68 „Winterthur-Töss“ | From rail station „Winterthur“: Bus no. 1 or 5





The warehouse is located directly after the gas station Migrol on the right side.



Access is only allowed from this side. Here you will find the entrance to the stairs.



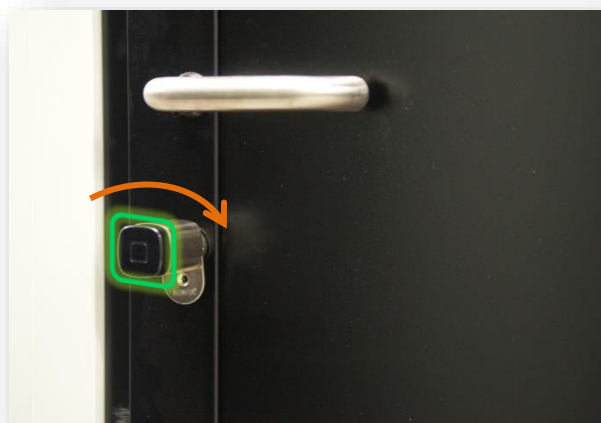
Drive around the building to get to the delivery ramps with the cargo elevator. Access after registration by personal badge / key card.



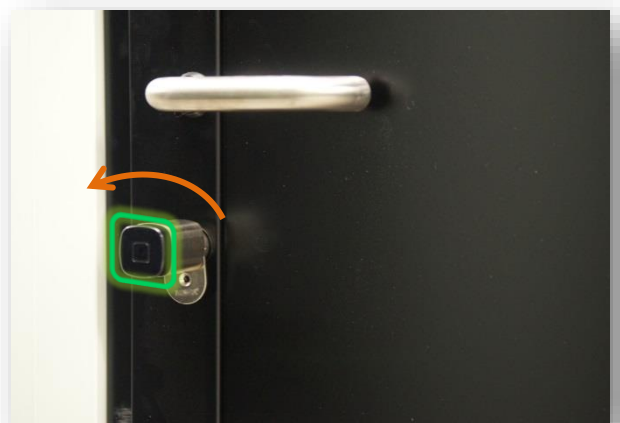
Please hold your key card to the KABA-sensor next to the entrance until it flashes green and you hear the door unlock (it takes a few seconds).

**IMPORTANT:** Even if the door or the roll-up door is already open when you arrive, you must register with your personal badge at the KABA sensor every time you visit the warehouse to activate access inside the building and to your storage unit for that day.

- › The gate at the ramp can be opened manually from the inside by rope pull.
- › With the cargo elevator or the staircase you reach the 1st. and 2nd. floor.
- › Please follow the orange numbers on the doors to find your personal storage unit.



Please hold your keycard to the KABA-sensor until the lock / doorknob flashes green. After that turn the doorknob rightwards to unlock the door.



To lock the door, please hold your keycard to the sensor once again and turn the doorknob leftwards.



## Please keep an eye on the battery status of the digital cylinder

Dear tenants

We would like to point out that the digital cylinder at the door to your storage box is powered by a standard battery.

In order to ensure 24/7 access, almost discharged batteries must be replaced promptly. Of course we make periodic checks and measure the battery charge level.

We measure from the outside with a device directly on the digital cylinder and also the battery change is done from the outside - we do not need access to your storage unit at any time and do not open any doors.

**If a battery needs to be changed between the regular checks, we ask for your help. Please let us know if the digital cylinder flashes red 4 times to indicate that the battery charge level is low and that a battery change is necessary soon.**

→ Please send an e-mail to [info@wiedmer.ch](mailto:info@wiedmer.ch)

- Last name First name according to rental contract
- Warehouse location
- Unit no.
- Battery status low / empty

---

## Battery full

Hold an authorised\* access card to the sensor, the cylinder will flash green once. The mechatronic unit engages, the lock can be opened or closed.



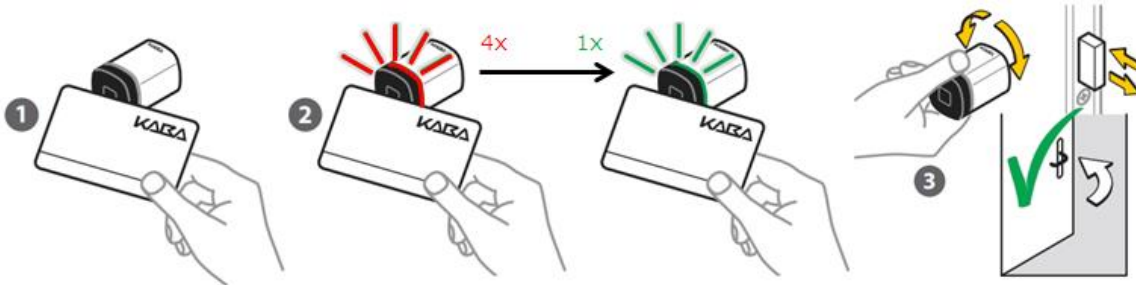
\*If the card is not authorised, the cylinder flashes red 4 times and the knob turns idle.

---



## Battery low → please report this as soon as possible

Hold an authorised access card to the sensor, the cylinder will flash 4 times red and 1time green.  
The mechatronic unit engages, the lock can still be opened or closed.



## Battery empty → please report immediately

Hold an authorised access card to the sensor, the cylinder will not flash and remains off.  
The mechatronic unit does not couple, the lock can no longer be opened or closed.



Thank you & best regards

Your <W> Lagerbox-Team



Sicher. Sauber. Trocken. w-lagerbox.ch  
self-storage by w. wiedmer ag